



MT-262024/TRH/A/K
902 - 928 MHz, 7.5 dBic RHCP READER ANTENNA



ELECTRICAL

REGULATORY COMPLIANCE	RoHS, CE 0682
FREQUENCY RANGE	902 - 928 MHz
GAIN	7.5 dBic (min)
VSWR	1.3 :1 (typ) , 1.5 : 1(max)
POLARIZATION	RHCP
3DB ELEVATION BEAMWIDTH	72° (typ)
3DB AZIMUTH BEAMWIDTH	77° (typ)
F/B RATIO	-14 dB (typ)
POWER	6W (max)
INPUT IMPEDANCE	50 (ohm)
AXIAL RATIO AT BORESIGHT	3.5 dB (max)
AXIAL RATIO @ ± 20°	3.5dB (typ) 4dB (max)
LIGHTNING PROTECTION	DC Grounded
MECHANICAL	
DIMENSIONS (LXWXD)	190 x 190 x 30mm (max)
CONNECTOR	TNC female Reverse polarity
WEIGHT	0.8 (Kgs) (max)
MOUNTING KIT	SEE RD41191800C
RADOME MATERIAL	Plastic
BASE PLATE MATERIAL	Aluminum with chemical conversion coating
OUTLINE DRAWING	RD42241100C

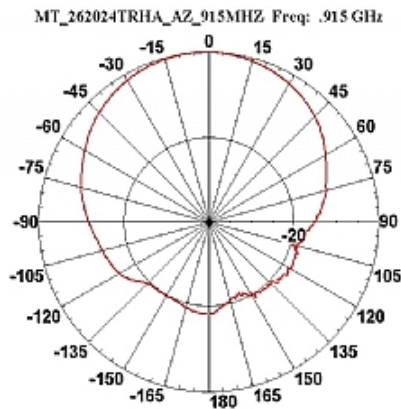
[ADD TO COMPARISON](#) | [COMPARE](#)

ENVIRONMENTAL

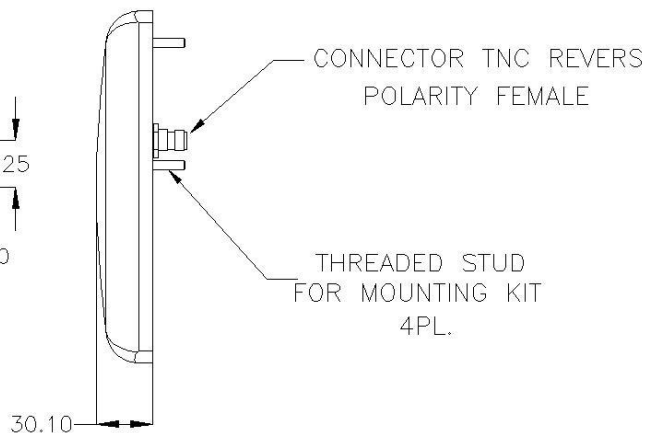
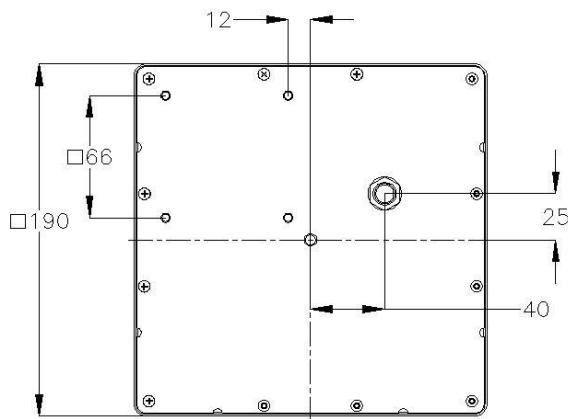
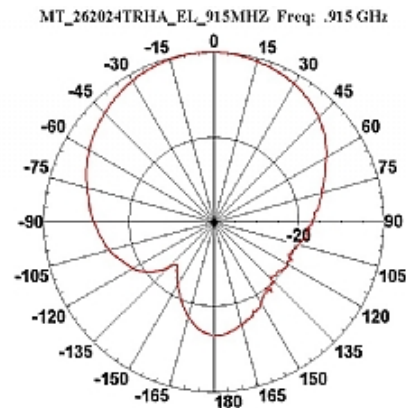
TEST	STANDARD	DURATION	TEMPERTURE	NOTES
LOW TEMPERATURE	IEC 68-2-1	72 h	-55°C	
HIGH TEMPERATURE	IEC 68-2-2	72 h	+71°C	
TEMP. CYCLING	IEC 68-2-14	1 h	-45°C +70°C	3 Cycles
THERMAL SHOCK NONO-OPERATING			-30°C to+70°C	Ramp 30°C/min
HUMIDITY	ETSI EN300-2-4 T4.1E	144 h		95%

WATER TIGHTNESS	IEC 529	IP67
DUST RESISTANCE		IP67
SOLAR RADIATION	ASTM G53	1000h
OZONE RESISTANCE	ETSI 300	
FLAMMABILITY	UL 94	Class HB
SALT SPRAY	IEC 68-2-1 Ka	500 h
QUASI RANDOM VIBRATION		20g rms for 4 hours
VEHICLE VIBRATION OPERATING	1 grms, 10-500 Hz, in 3 axis	6 hours total, 2 hr in each axis. Accelerated wear – an additional 50hrs in worst case axis.
MECHANICAL SHOCK OPERATING	10g, 11msec, half sine pulse	

**AZIMUTH RADIATION PATTERN MIDBAND
FREQ. 0.915 GHZ**



**ELEVATION RADIATION PATTERN MIDBAND
FREQ. 0.915 GHZ**



WAIVER!

While the information contained in this document has been carefully compiled to the best of our present knowledge, it is not intended as presentation or warranty of any kind on our part regarding the fitness of the products concerned for any particular use or purpose and neither shall any statement contained herein be construed as a recommendation to infringe any industrial property rights or as a license to use any such rights. The fitness of each product for any particular purpose must be checked beforehand with our specialists.

MTI Wireless Edge Ltd.

11 Hamelacha St. Afek Industrial Park Rosh Ha'ayin 48091, Israel
Tel: +972-3-9008900 | Fax: +972-3-9008901 | www.mtiwe.com



Authorized Reseller:
RFID4UStore
www.rfid4ustore.com
1-408-739-3500
sales@rfid4ustore.com